

Project Closing Workshop Report

for ITTO Project: PD 552/09 Rev. 1 (F)

Encouraging Customary Landowners in the Lowlands of Papua New Guinea's Central Province to Reforest their Grasslands with High Value Trees

Date: Wednesday, 13th April, 2022

Venue: Forest Policy & Planning Meeting Room at PNGFA (and Zoom)

Participants: Project partners and beneficiaries

Objectives: Share project achievements and lessons learned
Review draft project completion report

Presentations and discussions:

During the first session, project partners presented the 4 components of the model reforestation framework that the Project has created for Central Province.

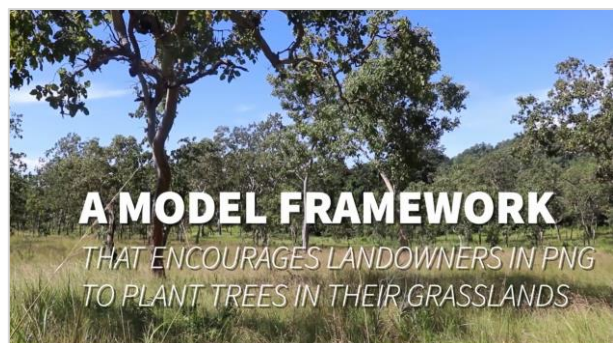
SESSION 1: PROJECT OUTPUTS

Output 1:

A reforestation awareness programme is in operation for landowners and the wider community

Simon Rollinson (PIP) presented the deliverables for Output 1 as follows:

- PPT presentation about the forestry education service that has been established for primary and secondary schools through the Forest Learners Kit, followed by a promotional video (top right) showing the model community schools at Barakau and Gomore.
- PPT presentation (given under Output 3, Activity 3.2) about the reforestation awareness service that has been established for landowners and the wider community through the Landowner Awareness Kit.
- MP4 video (bottom right) about the model reforestation framework showing the model reforestation enterprises at Gomore and Girabu.



The following points were discussed after the presentation:

- The Forest Learners Kit would be submitted in May 2022 to the NDoE's Quality Assurance Committee and Board of Studies for approval to be used as teaching aids in all PNG schools.

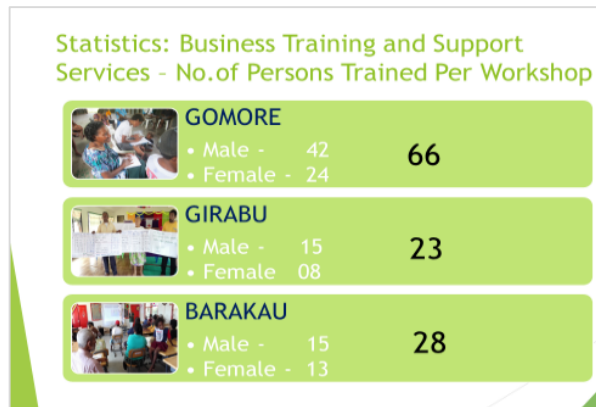
- The PNGFA would prepare a submission to the National Forest Board for endorsement.
- Once approved, the User Guide and Promotional Video would support the roll-out of Forest Learners Kit resources across PNG.

Output 2:

A business training and support package is in operation for small-scale reforestation enterprises

Bill Reuben (SMEC) presented the deliverables for Output 2 as follows:

- PPT presentation (right) about the Start Your Business (SYB) training program that was delivered at the 3 model communities (including awareness-raising, training & support services, and impact analysis), leading to small business plans and the formation of the Girabu Farmers' Cooperative and its community action plan.



The following points were discussed after the presentation:

- Lack of start-up capital for small business enterprises often leads to business plans becoming dormant.
- Landowner motivation to plant trees was often greater in remote locations with less distractions and opportunities.

Output 3:

An (agro) forestry training and support package is in operation for small-scale reforestation enterprises

Simon Rollinson (PIP) presented the deliverables for Output 3 as follows:

- PPT presentation about the reforestation awareness (Activity 1.2), training and support package that has been established through the Landowner Awareness Kit. This includes 1 tree selector pamphlet and 6 tree factsheets produced by the project to assist landowners choose, grow and make money from 6 high-value trees that grow well in Central Province.



The following points were discussed after the presentation:

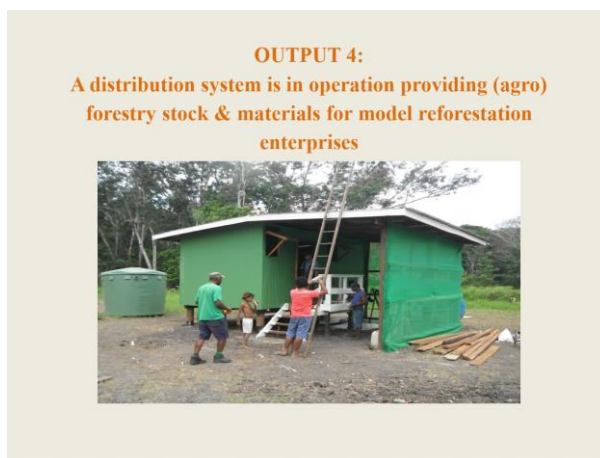
- Landowners often need financial support for reforestation activities.
- Support could be secured through the new ACIAR Project FST/2018/178 which is promoting teak and sandalwood plantations in East New Britain and Central province, and Operation Painim Graun na Planim Diwai which has limited funds available through the Reforestation Levy.
- The Landowner Awareness Kit User Guide and Promotional Video would support the roll-out of tree planting activities across PNG

Output 4:

A distribution system is in operation providing (agro) forestry stock & materials for model reforestation enterprises

Guduru Rome (PNGFA) presented the deliverables for Output 4 as follows:

- PPT presentation (right) about the establishment of 2 local distribution centres, the nursery operators' training program, and the upgrading work underway at the Kuriva Forestry Station. Whilst the PNGFA's provincial nursery is capable of supplying over 20,000 teak stumps per year from its seed orchards, the teak woodlots established by the Project will also provide a seed source for local distribution centres.



The following points were discussed after the presentation:

- Some teak trees, particularly in the woodlots at Gomore, are up to 15 cm in diameter. In the near future, sourcing and restocking teak seeds or planting materials will depend on these trees as well as sources identified within the vicinity of the project areas to support the project expansion. This will also create opportunities for landowners to sell seeds to local nurseries, aid projects etc.

During the second session, project beneficiaries explained how the model reforestation framework has supported the establishment of 3 model communities within the Central Province lowlands.

SESSION 2: PROJECT OUTCOMES

Model Community:

Barakau Community Outreach Centre

Adrian Robinson (Head Teacher, Barakau Community School) explained how the ITTO Project has set-up his school with a laptop, tablet and TV screen to access and utilise the Forest Learners Kit resources (for teachers), as well as the Landowner Awareness Kit and Tree Growers Tool Kit resources (for community members). School teachers were shown how to access these resources on Google Drive (online and offline), and also the PIP Website and YouTube Channel. Teachers were also given a selection of printed teaching aids to try out in the classroom alongside their digital resources.



Adrian advised that the Forest Learners Kit resources were well aligned with PNG's new Standards Based Curriculum. Although teachers are currently provided with guidelines, the teachings aids for each unit are missing. The Forest Learners Kit, therefore, has an important roll to play in all schools from prep to grade 12; providing teachers with the resources they need in the classroom.

Model Community:

Girabu Reforestation Enterprise

Vaburi Konido (Member, Girabu Farmers' Cooperative) explained how SMEC had assisted the Girabu community to establish the Girabu Farmers' Cooperative and Action Plan following a 2-week Start Your Business training at Girabu village. SMEC had also donated 10,000 Kina as seed capital for their model business venture.

Her family had allocated over 70 hectares of grassland for tree planting, with 5 hectares of teak trees planted to-date. These trees were growing quickly on ploughed land.

**Model Community:**

Gomore Reforestation Enterprise

Frank Agar (Member, Gomore Community) explained how the ITTO Project had worked with landowners from Gomore in Rigo District, and 5 hectares of teak were now growing along the Magi highway.

Frank also highlighted how the ITTO Project's integrated approach originated from the ITTO Pre-project, which had worked well with the Gomore community to identify the different problems affecting the establishment of plantations on their grassland areas.

**Conclusions and recommendations:**

During the third session, project partners and beneficiaries discussed how to roll-out the model reforestation framework over time both within and beyond Central Province, leading to the gradual rehabilitation of under-utilized grasslands across PNG. The following points were made:

- NDoE should ensure the Forest Learners Kit is approved at their next Board of Studies meeting.
- PIP should continue to assist the 3 model outreach centres to access and utilise the Forest Learners Kit, Landowner Awareness Kit, and Tree Growers Tool Kit resources, as well as support their ongoing roll-out in other communities.
- SMEC should continue to assist the Girabu Farmers' Cooperative to implement their Action Plan, as well as support the establishment of appropriate business arrangements in other communities.
- PNGFA should encourage the new ACIAR Teak & Sandalwood Project to build on the work that has been done by the ITTO Project (e.g. promote teak plantations on ploughed land at Barakau, Gomore and Girabu).

- PNGFA and project partners should discuss the design of a follow-up ITTO Project.

Workshop closing:

During the final session, Dambis Kaip (Forest Policy and Planning Director, PNGFA) thanked workshop participants for their valued and successful contribution to the ITTO Project, and a group photo was taken (below).



Annex 1 - Workshop program:

Closing Workshop Program
for ITTO Project: PD 552/09 Rev. 1 (F)
<i>Encouraging Customary Landowners in the Lowlands of Papua New Guinea's Central Province to Reforest their Grasslands with High Value Trees</i>

Date: Wednesday, 13th April, 2022
Time: 09.00 to 16.00
Venue: Forest Policy & Planning Meeting Room
Participants: Project partners
Objective: Share project achievements and lessons learned
 Review draft project completion report

Agenda:

09.00 to 09.30	Registration	PNGFA
Opening Session:		
09.30 to 09.45	Welcome remarks	Dambis Kaip Director FPPD PNGFA
09.45 to 10.00	Workshop agenda	Facilitator
Session 1: Project Outputs		
10.00 to 10.20	Output 1: A reforestation awareness programme is in operation for landowners and the wider community	Simon Rollinson (PIP) - Consultant
10.20 to 10.40	Output 2: A business training and support package is in operation for small-scale reforestation enterprises	Bill Reuben (SMEC)
10.40 to 11.00	Coffee break	
11.00 to 11.20	Output 3: An (agro) forestry training and support package is in operation for small-scale reforestation enterprises	Simon Rollinson (PIP) - Consultant
11.20 to 11.40	Output 4: A distribution system is in operation providing (agro) forestry stock & materials for model reforestation enterprises	Guduru Rome (PNGFA)

11.40 to 12.00	Discussion	Facilitator
12.00 to 13.00	Lunch	
Session 2: Project Outcomes		
13.00 to 13.30	Model Community: Barakau	Representative
13.30 to 14.00	Model Community: Gomore	Representative
14.00 to 14.30	Model Community: Girabu	Representative
14.30 to 15.00	Discussion	Facilitator
15.00 to 15.15	Coffee break	
15.15 to 15.30	Project completion report	Simon Rollinson (PIP) - Consultant
Closing Session		
15.30 to 15.45	Workshop conclusion	Facilitator
15.45 to 16.00	Final remarks Photo	Dambis Kaip Director FPPD (PNGFA)

Annex 2 - Workshop participants:

Nae	Position	Organisation
Adrian Robinson	Head Teacher	Barakau Primary School
Alois Jenkihau	Policy & Aid Coordination Manager	PNG Forest Authority (PNGFA)
Bill Reuben	Coordinator	Small & Medium Enterprise Corporation (SMEC)
Bure Kaman	Senior Curriculum Officer	National Department of Education (NDoE)
Claude Saliu	Research Officer (ACIAR)	PNG Forest Authority (PNGFA)
Dambis Kaip	Forest Policy and Planning Director	PNG Forest Authority (PNGFA)
Elizabeth Kaidong	Senior Mitigation & Adaption Officer	PNG Forest Authority (PNGFA)
Frank Agaru	Member	Gomore Community
Gewa Gamoga	REDD & Climate Change Manager	PNG Forest Authority (PNGFA)
Guduru Rome	Aid Coordinator	PNG Forest Authority (PNGFA)
Hano Yatapaya	Acting Reforestation & Afforestation Officer	PNG Forest Authority (PNGFA)
Kufa Aisi	Administration Officer	Barakau Community
S. Ernest	Head Teacher	Gomore Primary School
Simon Rollinson	Managing Director	Pacific Island Projects (PIP)
Stanley Pundaye	Planning Officer	PNG Forest Authority (PNGFA)
Ursula Miria	Curriculum Officer	National Department of Education (NDoE)
Vaburi Konido	Member	Girabu Farmers' Cooperative

Annex 3 - Workshop presentations:

Click to download:

- [Output 1 - PIP Presentation](#)
- [Output 2 - SMEC Presentation](#)
- [Output 3 - PIP Presentation](#)
- [Output 4 - PNGFA Presentation](#)